



527 OLD RENWICK ROAD, RD2, BLENHEIM 7272
MARLBOROUGH - NEW ZEALAND
PHONE +64-3-578-0468, FAX +64-3-578-0806
EMAIL: info@kiwiseed.co.nz
WEBSITE: www.kiwiseed.co.nz

NEWSLETTER

November 2021

ARE YOU AND YOUR HORSE READY FOR SHOW SEASON?

If your horse has been turned out for the winter, he would've lost muscle tone due to inactivity.

Get his fitness and tone back with the old "rule of thumb" workout.

Walk for strength, trot for rhythm and balance, and canter for endurance. If your horse has (more or less) been off training during the winter, start with a 30 minute work out, dividing your time more or less evenly among the three gaits. Work up slowly to an hour. And be sure to cool your horse down before returning him to his paddock. Again, the rule of thumb is walking for about 5 minutes at the end of the session. If the weather is still a bit on the cool side, you might want to untack him, drape a fleece cooler over him, and hand walk him for 5 minutes.

Remember to get your own fitness up too!

Time to clean your tack. We have a good range of products to clean and protect your tack ready for the coming season.



HOTTER DAYS AND MORE WORK MEANS...

Good Quality Electrolytes are required.—An increase in the work of a horse will create a requirement for an increase in electrolyte supplementation. Horses do not store sodium, potassium or chloride from one day to the next. Therefore electrolytes need to be adjusted according to the work level of the horse and the environmental conditions. Working in hot conditions will create a higher rate of sweat and therefore a need for greater replacement. When not in work the horse needs less, if over supplemented, it will increase water intake and urine loss.



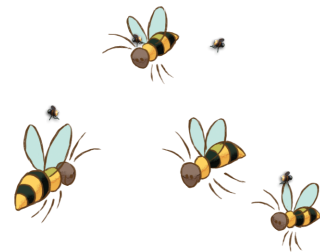
KEEP ON TOP OF PASTURE WEEDS THIS MONTH
Check out our range of options in store.



We are proud to now be stocking the Black Hawk Range of Cat and Dog Food.

Black Hawk Adult Dog Formulas are complete and balanced foods specifically developed for adult dogs and designed to meet their vitamin and mineral needs. Balanced nutrition is essential for maintaining a healthy body and mind throughout your dog's life.

Out in the garden



November is the time to :

Feed Citrus trees with Kiwi Seed Citrus Fertiliser and other fruit trees with Kiwi Seed Garden Fertiliser.

Remember to feed your Tomatoes and Strawberry plants regularly with Kiwi Seed Strawberry & Tomato Fertiliser.

Sow your favourite seeds directly into the garden such as; pumpkin, courgettes, parsnip and radish. For continuous harvesting sow at two to three weekly intervals. We now stock the wonderful Mr Fothergills range of seeds and still have some Yates varieties available. (While stocks last)

Plant another crop of seed potatoes so you can harvest ready for winter stews.

Place a layer of Daltons Mulch and Grow around the base of your edibles and fruit trees to help conserve moisture.

Side dress roses with Kiwi Seed Rose fertiliser. A layer of Daltons Mulch and Grow around the base will help retain soil moisture over summer.

For a lush green lawn apply Lawn Fertiliser when rain is due or water it in with a sprinkler.

Remember to keep the moisture up in your soil by deep watering your garden once a week over the warmer months.

THE RED MITE ISSUE

Protect your poultry from Red Mites by carrying out a spring clean in the coop. Wash out with plenty of water to flush away as many mites and eggs as possible.



Let dry completely they spray with Neem Oil or Smite Liquid making sure to get into cracks and crevice's.

Spray coop every 2 weeks to stay protected.

Dust Chickens with DeBug or Smite, alternatively create a dust bath with dry sand mixed with either of these products.



Honey and Pear

End of October, early November is traditional Sweetcorn planting time.
Seed is available at Kiwi Seed!

We would like to do our bit for the environment by sending out our accounts and newsletters via email.

Please subscribe by emailing us at info@kiwiseed.co.nz.

You can also use the same address to unsubscribe from the newsletter if you wish.

Thank you from all at Kiwi Seed.