



527 OLD RENWICK ROAD, RD2, BLENHEIM 7272
MARLBOROUGH - NEW ZEALAND
PHONE +64-3-578-0468, FAX +64-3-578-0806
EMAIL: info@kiwiseed.co.nz
WEBSITE:
www.kiwiseed.co.nz

NEWSLETTER

September 2022



PLANNING YOUR FEED BUDGET

Omaka barley is very palatable to all classes of livestock either grazed, baled or from the pit.

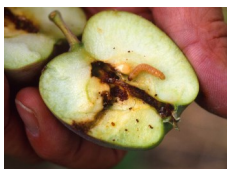
Spring sown **Omaka** barley will provide DM yields of 10000-14000kg per ha in 85-95 days or up to 130kg DM per ha per day, a light grazing will be beneficial to assist tillering of the crop then taken for balage or silage.

Forage barley will grow well in most soils, provided it has reasonable fertility and the timing of sowing is suitable for your district and soil type. **Omaka** barley will establish easily by modern direct seeding systems provided the established procedures are followed.

Omaka Forage barley has very good disease resistance to most barley plant diseases but in some instances a fungicide spray will improve the results expected of your silage.

Omaka can be cut for hay, balage or silage at the boot stage.
The crop at this stage will be high in protein and low in carbohydrates!

From this cut **Omaka** Barley will grow again for a second cut, subject to ground moisture.
Life weight gain of 600 gms/day has been achieved 2 years in a row by our clients.



NOW IS THE TIME FOR CODLING MOTH CONTROL

Spring Blossoms are beautiful and they are a signal to start protecting your apple and pear crops from this invader!

Codling moths are small greyish-brown moths that lay their eggs during Spring, onto leaves of apple and pear trees, usually near the fruit. The grub of the codling moth tunnels into the fruit, either on the side of the fruit or where the stem emerges. There might be a tell-tale lump of 'frass' (a collection of grub droppings on the skin) or if the grub has entered near the stem and eaten into the core there may not be any sign at all, until you cut open the fruit and there's a grub inside.

Start spraying apple and pear trees every 14 days, from petal fall with Yates Success Ultra.

Hang Sticky Pheromone Traps in the trees to capture the male moths. This is a good check to see if you have a problem and how bad it is.

For a more natural solution, Neem oil can be sprayed onto leaves and young fruit every 7 days.

Also Neem Tree granules can be spread around the base of your fruit trees every four to six weeks till under control.



IS YOUR PARASITE CONTROL UP TO DATE?

Now is the time to ensure all your stock, poultry and pets are up to date with their worm, flea and lice treatments.

We have products for most animals at home or on farm in store!

Potato Fertiliser and Seed Potatoes available in store now

Buy 1 or many
Old fashion favourites and some new varieties for you to try.
at very competitive prices.



The Spruce



September

Out in the garden

Complete your vegetable garden prep by digging in plenty of quality Daltons compost.

Once Seed Potatoes have sprouted, plant out in a warm, sheltered position.

Feed berry vines, citrus and fruit trees with Kiwi Seed Citrus fertiliser or a liquid organic fertiliser.

Protect seedlings from slugs and snails with Blitzem Slug and Snail pellets or No Pest Slugoff Lentils.

Now is the perfect time to sow new lawns. We have a great range of untreated lawn seed for faster germination.

Spray now for Onehunga weed and broadleaf weeds with a turf or prickle weed killer and be prickle free this summer. Several options in store.

SPRING CLEANING CHECKLIST FOR THE BARN/FARM

- ◆ Scrub buckets, feed bins/bowls and water troughs that have been used over winter.
- ◆ Wash pet bedding and dry in the sun to get rid of flea eggs.
- ◆ Inspect your buildings and complete any repairs or maintenance. Remember to check wiring for rodent damage.
- ◆ Clean gutters and downspouts.
- ◆ Strip out animal shelters/housing, scrub walls, remove bedding and disinfect floors.
- ◆ Before re-bedding, make sure everything has air dried.
- ◆ Clean feed storage bins and replace any old or damaged ones.
- ◆ Check the quality and dates on all supplements, feeds, and medications. Discard all outdated drugs or supplements.
- ◆ Restock first-aid kit.
- ◆ Disinfect and clean grooming equipment.
- ◆ Send horse covers for cleaning and repair, then store in a dry rodent-proof location.
- ◆ Check water troughs are working properly and are free from leaks.
- ◆ Walk the fence line and make repairs or organise a fencer.
- ◆ Inspect pasture quality. If needed, send soil samples off for testing to develop a fertilising plan.
- ◆ Chain harrow to spread manure, dead grass, and even out rough areas.
- ◆ Work on problem drainage areas you noticed over the winter.
- ◆ Check your animal health regime is up to date.



Wildflowers for Marlborough blended here at Kiwi Seed

Talk to Hamish about what you can do to increase beauty and biodiversity in your garden or vineyard



We would like to do our bit for the environment by sending out our accounts and newsletters via email.

Please subscribe by emailing us at info@kiwiseed.co.nz.

You can also use the same address to unsubscribe from the newsletter if you wish.

Thank you from all at Kiwi Seed.