



527 OLD RENWICK ROAD, RD2, BLENHEIM 7272
MARLBOROUGH - NEW ZEALAND
PHONE +64-3-578-0468, FAX +64-3-578-0806
EMAIL: info@kiwiseed.co.nz

NEWSLETTER

September 2018

*"Some old-fashioned things like
fresh air and sunshine are hard to beat."*

Laura Ingalls Wilder got to the heart of the matter with her quote.
"So get out of the house and enjoy the air, sun and sounds that come with spring."

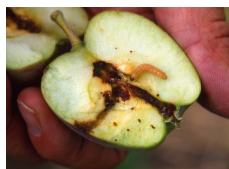
Omaka barley is very palatable to all classes of livestock either grazed, baled or from the pit. Spring sown **Omaka** barley will provide DM yields of 10000-14000kg per ha in 85-95 days or up to 130kg DM per ha per day, a light grazing will be beneficial to assist tillering of the crop then taken for balage or silage.

Forage barley will grow well in most soils, provided it has reasonable fertility and the timing of sowing is suitable for your district and soil type. Omaka barley will establish easily by modern direct seeding systems provided the established procedures are followed.

Omaka Forage barley has very good disease resistance to most barley plant diseases but in some instances a fungicide spray will improve the results expected of your silage.

Omaka can be cut for hay, balage or silage at the boot stage.
The crop at this stage will be high in protein and low in carbohydrates!

From this cut **Omaka** Barley will grow again for a second cut, subject to ground moisture. Life weight gain of 600 gms/day has been achieved 2 years in a row by our clients. Undersow with Prima gland clover for increased protein content of feed.



Most children love apple sauce but if you would like to be able to enjoy an apple or pear off your tree in autumn without having to check and turn it over and over looking for evidence of grubs, you need to get active now.

Depending on the weather and the amount of warmth, it is drawing close to when the codling moth and grass grub will start to emerge. The codling moth emerges after apples, pears and walnuts fruit have set on the trees. They mate and lay up to 300 eggs on the foliage of the host trees.

Codling moth pheromone traps lure the male moths to it's sticky pad. The trap is not a perfect control but it is a fantastic monitor determining when the moths are active and then start spraying about 7 days later. Neem Tree Oil prevents the hatched grubs from eating and growing, spraying only the small fruit for good coverage. Spray late in the day after the sun is off the tree and repeat every 7 - 10 days.



KIWI SEED LOYALTY CARD

Purchase a **25KG bag** of **KIWI SEED LAYERS MEAL** from us, we'll stamp your card, when you reach **10**, we'll give you a **FREE 25KG bag** of **KIWI SEED LAYERS MEAL** to say **'THANK YOU FOR BEING A LOYAL CUSTOMER'**

Potato Fertiliser and Seed Potatoes available in store now

Buy 1 or many
Old fashion favourites and some new varieties for you to try.



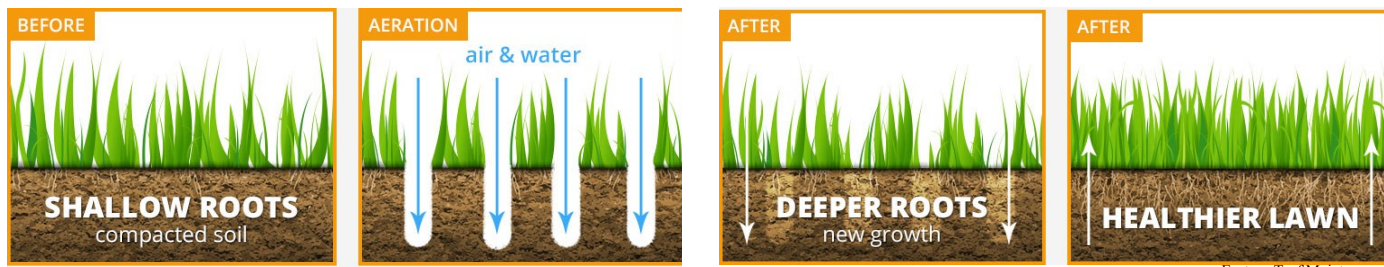
The Spruce

Out in the garden



September

Lawn care—Soil aeration and overseeding is important for healthy, great looking lawn.



Aeration reduces soil compaction, which allows roots to grow deeper into the soil to find vital water and nutrients in times of stress.

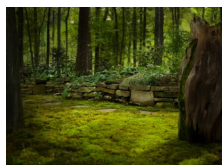
Aeration also reduces thatch, which is made up of grass stems and roots that accumulate faster than they break down. Excess thatch creates an environment that is favourable to pests and disease. Over time, grass plants reach their peak and need to be replaced due to foot traffic, heat, lack of water, pet waste etc. Once you have completed the aeration, overseed with new grass seed to fill in bare or thin areas as well as thicken existing lawns. A thick lawn is the best defence to weeds.

Lawn seed blends reduce the risk of diseases that can wipe out the entire lawn.

Kiwi Seed have got 3 different types of lawn seed mixes available being regular, hardy, and superfine Lawn seed.

Aerate your soil 2-3 times per year and see the results yourself.
Overseeding is only needed when lawns are starting to thin out.

Contact turf professionals for bigger areas or use what you have got in your shed already.



Heard of Moss gardens? Moss stays green all year long, yet requires very little sun and water. It can be grown as an alternative to traditional lawns. It is beautiful, eco-friendly and low maintenance as it doesn't need fertiliser, pesticides, mowing or mulching. What you do need are plenty of trees and humid conditions.

Moss in traditional lawns is a problem as grass will not survive. Since moss likes shady and humid places, check if you can improve the amount of sunlight the area receives by pruning bigger shrubs and trees first. Can you improve the drainage? Then apply iron sulphate, when the moss goes black, you can then rake it out, re-sow where needed and fertilise. Products are available in store.

Wildflowers for Marlborough blended here at Kiwi Seed

Check with Maren about what you can do to increase beauty and biodiversity on your place.



We would like to do our bit for the environment by sending out our accounts and newsletters via email.

Please subscribe by emailing us at info@kiwiseed.co.nz.

You can also use the same address to unsubscribe from the newsletter if you wish.

Thank you from all at Kiwi Seed.